

# THE LINK

Quendon & Rickling

Parish  
and Church

# NEWS

May 2017

You can find THE LINK  
and much more at

[www.quendonandrickling.co.uk](http://www.quendonandrickling.co.uk)



*Architecture 2 Jane Davis: St Pauls*

## In this issue

Church Services	2
Church Contacts	2
Letter from the Vicar	2
Police Contacts	3
PC Chairman's Message	4
Quendon & Rickling Rainbows	4
Parish Council	4
100 Club	5
Quiz Night	5
Coffee Morning	5
Village Shop	5
Hundred Parishes	6
School	6
Burglar Alarms	7
Coffee Club	7
FunRun 2017	7
District Council News	8
Saffron Screen	9
What's On	9
Photo Comp	9
Publication Details	10
Emergency Life-saving	10

*Another winner from the  
Quendon & Rickling  
Photographic Competition  
Spring 2016*

Visits: If you would like the Vicar to visit you at home or in hospital, or know of anyone who would like him to visit them, please let the Vicar know.

**The Rev'd. Neil McLeod**, The Vicarage, 5, Meadowford, Newport, Saffron Walden, Essex, CB11 3QL

**Telephone:** 01799 540339 **E-mail:** [mcleod444@btinternet.com](mailto:mcleod444@btinternet.com)

## From the Vicarage Study

Rev. Neil McLeod,

Priest-in-Charge of Newport with Widdington, Quendon and Rickling.

I am writing this article on Easter Sunday afternoon, after having completed three communion services around the benefice. Tomorrow I am heading away for a 5-day break visiting friends. Over the past few months I have been quite busy not just with the preparation for Easter, but also a higher than average number of funerals and/or thanksgiving services. I love what I do and I know I am serving God exactly where he wants me to, but it is nice just to stop.

It's more than nice; it is a theological and biblical standard. The essence of resting comes in the very first chapter of the Bible in Genesis, where God rests on the seventh day after he has finished creating the heaven and the universe, and all that lives upon the earth. A Sabbath day of rest is what God takes, and we are all asked to keep the Sabbath day holy. Only life is now filled with many different activities and essentially a day of rest no longer exists. Even when people go on holiday, especially when young children are involved, it is anything but a rest. Yet, I believe, that the biblical imperative to rest is important.

It is important to rest physically. We all need time to recharge our batteries. We all need to find or make some time where we can just switch off, even if it is in front of the TV or listening to music, or reading a good book. I find that reading a book certainly helps me to unwind, unless I'm near the end of the book and then I have to read to the end to find out what happens. I also think it is important to rest our minds; and once again it is good book that enables me to switch off at night rather than head to bed to worries or concerns about the next day going around my head.

In the gospels Jesus often went off by himself to be alone. He sat in quiet and pondered, and he also prayed to God. He was teacher, healer, friend and leader, but he was a man. As such he needed rest for both his body and mind, and he needed to be refreshed physically, mentally and spiritually. I know that I am looking for all of that in the next five days away, and I am determined not to check any emails on friends' laptops. I need the break. Indeed we all need a break from time to time, and I hope that you manage to get it.

Neil

### Church Services in the Benefice

#### Sunday 7th May

9.30am	Widdington	Family Service
11.00am	Newport	Family Communion

#### Sunday 14th May

8.30am	Widdington	BCP Communion
9.30am	<b>Quendon</b>	BCP Communion
11.00am	Newport	All-Age Service

#### Sunday 21st May

10.00am	Priors Hall Barn	Rogation Service
6.00pm	<b>Quendon</b>	BCP Communion

#### Sunday 28th May

8.00am	Newport	BCP Communion
9.30am	<b>Rickling</b>	Holy Communion
11.00am	Newport	Morning Worship
3.30pm	Newport	Messy Church

#### In addition to these services, prayer meetings are held as follow:

Quendon, Mondays 4 30 pm  
Rickling, Thursdays 9 00am  
Widdington, Tuesday 9 00am  
Newport, Wednesday 4 30 pm.

#### Priest in Charge of Newport with Widdington and Quendon and Rickling.

The Rev'd. Neil McLeod, The Vicarage, 5, Meadowford, Newport, Saffron Walden, Essex, CB11 3QL

Telephone: 01799 540339 E-mail: [mcleod444@btinternet.com](mailto:mcleod444@btinternet.com)

**Churchwardens -** **Quendon:** Mrs Maureen Hawkins 01799 543201 and Mrs Christine Osbourn 01799 543367  
**Rickling:** Lisa Huxtable 01799 542995

**Treasurer -** **Quendon and Rickling:** Mrs Sandra Arnold 01799 543075



## Contact details for local Police

Essex Police operate through Local Policing Hubs, and it is not possible to contact individual members of that team for day-to-day activities.

The recommended procedure is to contact the police using the 101 service (if 999 is not appropriate, i.e. for non-emergency situations). Calls to the 101 Centre will determine how to respond and, where appropriate, this will be passed to either Response Officers or members of the Local Policing Hub.



## Quendon & Rickling Parish Council News

### **Parish Council Meetings**

At this month's meeting, communications were the subject of discussion. A number of Parish Councillors spent a Saturday morning poring over the laptop and receiving some tuition on how to upgrade and modernise the Village website. It is now much easier to navigate and full of village activities that you are all welcome to attend. Take a moment to browse at [www.quendonandrickling.co.uk](http://www.quendonandrickling.co.uk). If there is anything you would like included then please let the Parish Clerk know.

Facebook was also on the agenda, the Parish Council are also on Facebook, this is new to us so please be patient and keep visiting our page.

Following each meeting, the draft minutes are uploaded to the village website as above.

The next meeting will be the Annual Parish meeting on 10th May at 7.30 pm, this will be followed by the Parish Council meeting. Both will be held at the Village Hall, there will be an Agenda on the village website as well as being displayed on the notice boards. Everyone is welcome to attend.

### **Village circulation list**

As you are aware there was a problem with the refuse collection recently, all those on the village circulation list were notified which was very useful.

If you would like to be included and receive email updates/notices which are of interest to residents, send your email address to the Clerk who will be happy to add you to the village circulation list.

### **Essex Police Active citizen Scheme**

In the previous Link issue, we brought to your attention the Active Citizen Scheme, in case you missed it, this is a new initiative from Essex Police who are looking for a volunteer to be a link between the village and the Police.

Ideally, Essex police are looking for local people who know the area well and who are willing to spend some time speaking to local residents, running "Beat Surgeries", taking part in organised events in their area, or, even in supporting other areas.

This is a non-confrontational role and supported by your Community Policing Team. Volunteers must be 18 or over.

Potential volunteers will be subject to some initial

background Police checks before they are signed up as an Active Citizen. Where it is necessary and appropriate for an Active Citizen to have access to confidential Police information they will undergo fuller vetting.

Details of the Essex Police Active Citizens scheme can be found at <https://www.essex.police.uk/join-the-police/volunteers/active-citizens/>

If you would like your details passed on to Essex Police please contact the Parish Clerk.

### **Notice Boards**

There are three notice boards around the village, one at Coney Acre, another at Thistley Crescent and one outside the Village Hall. These are updated on a regular basis and always worth looking at to find the latest events in the village and surrounding areas. If you have any events that would be of interest to residents, pass the details to the Parish Clerk who will be pleased to display them on the boards.

### **Household repairs**

Should anyone have any minor repairs around the house and you are over 65 or disabled or at risk of falling due to illness or other factors, the Papworth Trust Handyperson service is available.

Tel 0300 333 6543 [www.papworthtrust.org.uk/homes-and-repairs/handyperson-service](http://www.papworthtrust.org.uk/homes-and-repairs/handyperson-service)

### **Welcome Packs**

The Parish Council provides a Welcome Pack of information for new residents to the Village. The pack has now been updated and delivered to known new residents, if anyone knows of any newcomers to the village that have not received the pack, do please let the Clerk know on the contact details below and a welcome pack will be dropped off to them.

### **Allotments**

Anyone interested in taking up an allotment should call Peter Warwick on 01799 543526.

We understand that there are still some plots available and it may be possible that some existing ones may be divided up.

### **Highway Problems**

The Essex Highways website is available for anyone noticing a problem to report it: <http://www.essexhighways.org/Report-a-problem.aspx>

A tracking facility for all reported faults is available.

#### **Police/Crime**

The Essex Community Messaging Service provides useful information to the public about policing and safety issues. It is free to register and information is given relative to your postcode, thus providing accurate and up-to-date community safety information and crime prevention advice. Users can choose to receive information via e-mail, text or voice-recording and can select what information to receive – based on where they live and work and on issues of interest. For further details and to sign up, visit [www.essex.police.uk/ecm](http://www.essex.police.uk/ecm)

#### **Walking the Dog**

Uttlesford District Council has a clear message on Dog fouling:

***Please clean up after your dog – Bag it and Bin it.***

*Failure to clean*

*up after your dog could result in a £1000 fine!*

To report incidents of dog fouling call the council's Customer Service Centre on 01799 510510.

Alternatively, fill in an online form at [www.uttlesford.gov.uk/animalfoulingreport](http://www.uttlesford.gov.uk/animalfoulingreport)

#### **Children's Activities**

Armadillos A Bumps, Babies, Toddlers and Parents group meets every Tuesday (term time) from 9am-11am at Rickling School Hall

#### **Buffy Bus**

Is no longer visiting the Parish, the Wednesday service has been rescheduled to stop at Cherry Garden Lane, Newport between 9.15am and 10.30am

#### **Contact the Parish Council**

The Clerk, Anne Webb can be contacted by e-mail [quendonandrickling.clerk@hotmail.com](mailto:quendonandrickling.clerk@hotmail.com) or by telephone 01799 543988.

### **This month's message from the Chairman of the Parish Council**

Here we are approaching May again. That means election time of course. For as long as I have been a councillor, I and the other PCs have been elected unopposed. This is fine as long as it means everybody is happy with the job we're doing, and it even works if it means you are just not sufficiently concerned that you would like to see a change. But it is your opportunity, subject to various legal requirements, to apply to join the PC and thereby force an election. So if you're not happy with us, or if you believe you could do a better job than one, or some of us, now's your chance. For information on how to go about it please feel free to call me.

You will see elsewhere that some exciting progress is being made on various issues concerning our villages. There are also other areas where we are hoping to bring good news in the not too distant future. I won't go into those yet because I don't want to get any hopes up, only to disappoint later. But in all of this I can assure you that your Parish Councillors are doing their level best.

I intend to make another attempt to talk ECC into putting in place some sort of traffic management on the B1383 through the village. No doubt funding will be an issue, and we already know that the width of the road restricts the types of schemes that will be considered, but I do feel there is a need to do something to limit the speed, and even the amount of traffic that passes along our stretch of the road. If you have ideas about what you would like to see then, again, give me a call.

That's me for now, enjoy the summer.

Alan.

*A man walked into a psychiatrist's office wearing nothing but cling film wrapped round his middle.*

*The shrink says, 'Well, I don't have to be that good at my job to see you're nuts'.*

*Well I'm running out of material!*

### **Quendon & Rickling Rainbows**

Unfortunately the lady we were giving our plastic lids to is moving so we are unable to pass them to her. Consequently we are not able to collect them any more. May we take this opportunity to thank everyone who has been collecting them for us for the past year. We really appreciate it!

Just a date for your diaries also.....

**July 3rd. 4.30 - 6pm at Quendon & Rickling Village Hall**

Everyone is invited along to our Rainbow meeting to see what we do. We will have a stall selling things we have made, a cake stall, raffle and we will have tea & coffee & biscuits! You can come along, meet us, play games and help us raise some money for Pinky Pie. Pinky Pie is one of our leaders and she is raising money for Cancer. She needs to raise £500 to enable her to take part in the race. We thought as she does so much for us we would try to do a little something brilliant for her. Put the date in your diaries and come and join the madness. See you there!



## Proposed Village Shop

We are delighted to report that we have made some progress in setting up a Community Shop in and for, the village.

We have recently had a very fruitful meeting with Paul Cutsworth, who is the Publican at the Cricketers Arms. Paul is very keen to be much more involved in the village and has agreed in principle that we could set up a shop within the Pub, initially to sell basic goods but, depending on the uptake, could be expanded to cater for other needs. Various permissions have to be sought but things look very encouraging at the moment, It will be for the village to support, by whatever means we can, this initiative and to that end I would like to thank those people who have come forward so far, we have 7 or 8 volunteers and we will be contacting them to meet up with us in May. If anyone else is interested, for whatever reason, please get in touch.

It is planned that we produce an article, to be included in the June edition of The Link, which will give much more detail, such as what may be on offer and when.

**WATCH THIS SPACE!!**

Brandon Chapman - [pebbles4@btopenworld.com](mailto:pebbles4@btopenworld.com) 543518

Alison Harrison Dees - [hrrsnda@aol.com](mailto:hrrsnda@aol.com)

Tracey Hepting - [traceyhepting@hotmail.com](mailto:traceyhepting@hotmail.com) Also on Facebook.

## NhW NEWS

The 2017/2018 Annual General Meeting of the **Uttlesford District Neighbourhood Watch Steering Group** will take place at the Thaxted Day Centre, Vicarage Lane, Thaxted, Dunmow CM6 2RL on Monday 15th May starting at 7.30 pm (tea and coffee will be available from 7.00 pm). All members are welcome and parking is available in the nearby Margaret Steer car park.

The current officers have all indicated to willingness to continue, but any other nominations should to be sent to me by not later than Monday 8th May.

Following the AGM, we have three colleagues from Essex Police who will speak to us about Community Policing and Crime prevention advice. We are also very pleased to have D. Insp. Lee Morton, Cyber Crime Unit, Kent & Essex Serious Crime Directorate attend and give us an insight into this growing crime trend and how to protect ourselves and our members from becoming a victim.

Alan Johnson, Chair – UDNhW Steering Group Email: [nhw@acjohnson4.plus.com](mailto:nhw@acjohnson4.plus.com)

## Quendon & Rickling 100 Club

Congratulations to our lucky winners this month:

1st prize.....56. Lorraine Chandler

2nd prize..... 32. Janet Everiste

3rd prize.....67. Sarah Gemmill

If you would like to join us this year please call me and I will get you signed up pronto! £2 a number per month (up to 5 numbers) and you're in!

Many thanks, Clare. 01799 543637

## Coffee Morning and sale at the Village Hall on Saturday 3 June 10.am-12noon.

There will be coffee and cake as well as sale of cakes, preserves, bric-a-brac, handmade items, plants and books and a raffle.

Everyone welcome to join us for a social morning.

Proceeds towards the Extend Annual outing later this year to Wyken Hall Gardens.

Details of the trip will appear in a future issue of THE LINK

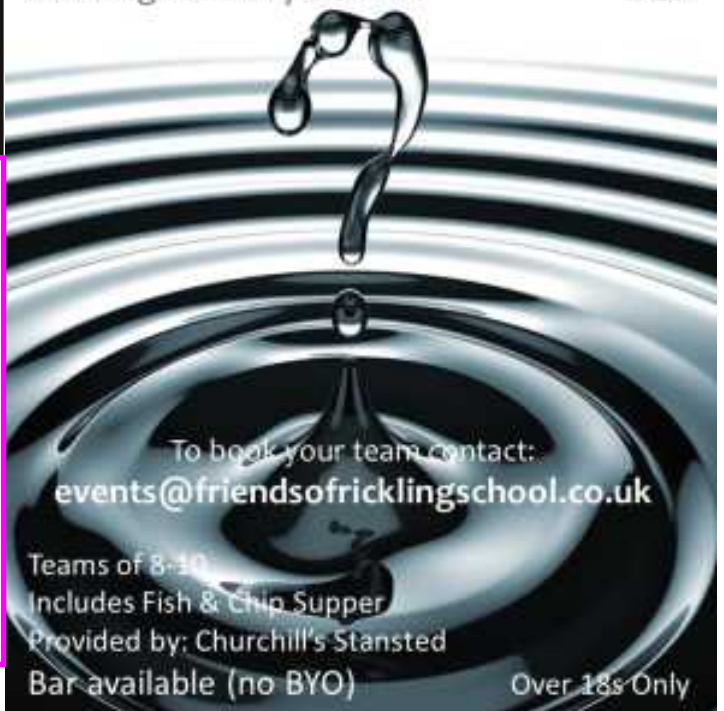
## QUIZ NIGHT

Friday 19<sup>th</sup> May

7:30pm

Rickling Primary School

£10





## THE HUNDRED PARISHES SOCIETY

[www.hundredparishes.org.uk](http://www.hundredparishes.org.uk)

After almost 2,000 years, there is still considerable evidence of Roman occupation of this area. It was not until their arrival in 43 AD that a national network of all-weather roads was built. The first were constructed between the capital, London, and bases used by the Roman legions. The network was maintained and extended through almost 400 years of Roman occupation. Main highways were either gravel or paved with stone. They were so well constructed that they could be used in all weathers.



*Wendens Ambo Church doorway with Roman bricks*

The main roads were originally built by the Roman army. Those in our area included Ermine Street (which ran north from London and in the 20th century was designated A10) and Stane Street (later A120) between Braughing, a substantial Roman fort on Ermine Street, and Colchester, the original Roman capital of Britain. Another substantial fort-cum-town developed at Great Chesterford. Artefacts from there can be seen at Saffron Walden Museum.

A review of local Ordnance Survey maps will soon reveal tell-tale straight lines that indicate a route of Roman origin. At least twenty of today's Hundred Parishes were served by a Roman road

The fact that these routes were well-travelled and linked forts and other settlements means that we have a rich source of Roman remains. Recycled Roman bricks, usually flatter and longer than the modern equivalent, can be found in several parish churches. They include Great Canfield, Great

and Little Hallingbury, Sheering, Takeley, Wendens Ambo, Westmill and White Roding.

One of the finest Roman burial sites in Europe can be visited at Bartlow. The intrepid explorer can climb a wooden stairway to the top of the largest surviving barrow, some 40 feet high. You can read about the "Bartlow Hills" within the introduction to Bartlow parish on our website [www.hundredparishes.org.uk](http://www.hundredparishes.org.uk).



*Bartlow Hills*

**Ken McDonald,**  
*Secretary*

### What have they been up to at Rickling Primary School?

These pictures involving Easter bonnets, Colchester Zoo and Joseph (and the Amazing Technicolour Dreamcoat) offer some clues!





## Hello Everyone!

Our third FunRun is in full preparation mode to make it as successful as 2016. We raised over £8000 for Rickling School which was used to refurbish the school library and the provision of a home economics suite for the children. This year the school is planning to build a Multi Use Games Area (MUGA) which will benefit the school immensely and we would like to raise a big chunk of the money needed from the FunRun.

For those of you that have volunteered previously, you will know what a great day it is for both villages as well as being part of an event that makes such a positive impact on the school.

This year's format is much the same as last year which means we are looking for around 60 volunteers/marshals to make sure everything runs like clockwork. We would love to see as many of last year's marshals as well as some new faces. For those of you who are new to the villages, this event is a great way to get involved!



We are not asking you to volunteer all day (although you are welcome to!), just an hour or two would be fantastic. Please go to the link <http://doodle.com/poll/6ces6gtdxgtrcf3f> and tick what times you would like to volunteer for. Please note that this link is also on the quendon and rickling Facebook page. If you would like to do the same role as last year or you would like a particular job, please email me to let me know. I'll be sending out email updates for all volunteers so if you could send an email to [quendonandricklingfunrun@hotmail.com](mailto:quendonandricklingfunrun@hotmail.com) so I have your email address.

Look forward to hearing from you all!

Stevie Green, Marshal Organiser



### Rickling/Quendon Coffee Morning Club

#### Pub Quiz and Ahoy Bingo



**Wednesday 17 May 2017**

**10.00 am – 12.00 pm**

**All proceeds to go to the Village Hall Fund**

**Please contact: Carole 01799 543807**

**Quendon & Rickling Village Hall,**

**Quendon, CB11 3XQ**

## Cold Calling Alarm Companies

If you are concerned about your security and considering fitting a burglar alarm, contact your local police crime reduction officer who will give you free advice. We recommend that you get at least three quotes from accredited companies found using the web sites [www.nsi.org.uk](http://www.nsi.org.uk) or [www.ssaib.org](http://www.ssaib.org) before making your choice, or choose a Trading Standards "Buy with Confidence" accredited company. Buy with Confidence companies have been vetted by Trading Standards and have all the right accreditations; have a look at [www.buywithconfidence.gov.uk](http://www.buywithconfidence.gov.uk) or ring 0345 404 0506.

Residents throughout the county have reported receiving unsolicited telephone calls from companies who say that crime is on the increase and that they are at risk. These companies offer to install a free or a very cheap burglar alarm and claim or imply they are working with agencies such as the Home Office or the police. This is not true.

If you do feel that you have been a victim of cold calling regarding home security then contact Trading Standards on 08454 040506 or [trading.standards@essex.gov.uk](mailto:trading.standards@essex.gov.uk)

As a crime prevention officer I will be happy to help with any queries from people who want advice to keep themselves and their property secure whether it is installing an appropriate burglar alarm or something as simple as having proper home locks fitted. I can be contacted using the national police non emergency telephone number of 101.

*Stephen Armson-Smith – Braintree and Uttlesford*

## Report from District Councillor Neil Hargreaves

### Local Plan

District councillors have recently been given a series of presentations from developers, land owners and their agents promoting the seven sites for possible new settlements in the district. These included Elsenham, which is still being considered despite having previously been rejected by every possible authority, and north of Great Chesterford, rebranded as North Uttlesford Garden Village. Some of the presenters were very professional and well informed, and one even gave historical and archaeological background including a map from the C17th. Quite interesting was one developer showing a view of another developer's poor street layout on a neighbouring estate, compared with what the proposer wanted to do, which did appear superior and was displayed in both map format and a switch to moving street views. Other presentations were however not so good, with one presenter struggling with fairly obvious questions (which a local person could probably have answered!) and giving standard generic responses

The outcomes from this will be in a public consultation later in the year. In the meantime councillors have been asked not to make too much public comment on the various options

The presentations are available online at <https://drive.google.com/drive/folders/0B-tNd9QU7xs0RnZUamR0WURpaTA> if you are reading the web version of this, or google 'uttlesford developer presentations'

The not so good news is that I believe Uttlesford no longer has a five year housing supply, which is re-set every 1st April. (Haven't seen confirmation of this yet.) The delays in finishing the Local Plan mean that the required number of houses has increased. This means it is now easier for developers to make speculative applications as the 2005 Plan development limits can be decreed not applicable

### By-election and County election

The Link should be out just before the 4th May County and District elections. The full list of candidates for the district are Anthony Gerard (Residents for Uttlesford), Jayne Pacey (Liberal Democrats) and Paul Simper (Conservative). All live in Newport.

We have two votes and the R4U candidate Anthony Gerard is also standing for the County Council. The other candidates are Melvin Caton (Liberal Democrats), Ray Gooding (Conservative), David Allum (UKIP), Karmel Stannard (Green) and Thomas van de Bilt (Labour). The UKIP and Green candidates do not live in the Division; the others do.

So two elections are being fought here, not counting the General Election just called at the time of writing. There are tight expenditure restrictions on local elections. Our Stansted county division has 15,300 voters and an expenditure limit of £1658 ie 11p per voter, but for Newport district ward with 2,720 electors it is £903, which is 33p each. The county division is of course more difficult to cover, with a wide geographical spread from Clavering and villages south down the Stort valley and from Newport down to Birchanger, with all stops in between, and either side, so the tighter restriction seems odd. In contrast MPs get a free Royal Mail delivery to all voters!

### School Transport

There is nothing more to report on this at present. Even if there was, the Department for Education would probably remain silent while related council elections are in progress – UDC have requested officers to be circumspect in issuing any material which might influence election results and this purdah applies generally. However, I have continued to supply evidence to the DfE and a parent has informed me that the Local Government Ombudsman had delayed publishing an adverse conclusion as they were having second thoughts and are taking legal advice

### New Homes Bonus

Our allocation for this year is reduced to £2000 per councillor and will be phased out possibly next year. Over the last two years Jo and I have allocated NHB cash for all sorts of things across the ward. These include repair work on Quendon Village Hall, Widdington Church, Newport Church, to both primary schools, Brownies, Scouts, the Newport Youth Centre, toddler groups, for a Newport map (different style to the Quendon and Rickling one, but same concept) to Saffron Screen for showings in Newport Village Hall and a number of other donations.

As some councillors don't spend all their allocations (why not?), I asked the chief exec if the unspent amounts could be transferred to those who would spend it. Still waiting on this one!

*Neil Hargreaves*



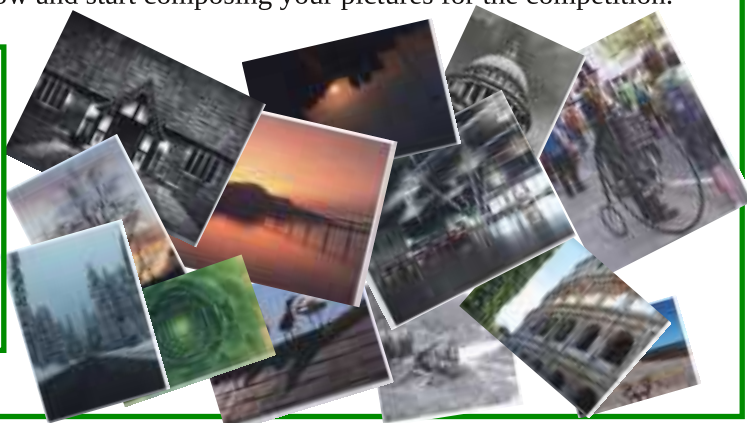
## The Quendon & Rickling Photographic Competition 2017

The Quendon & Rickling 2017 Photographic Competition entries will be exhibited at the Village Hall on the 28th-29th of May 2017. Get your cameras and phones out now and start composing your pictures for the competition.

### Classes:

- *Bridges*
- *Reflection*
- *Night*
- *Weather*
- *Wood*
- *Mystery*

**The Exhibition will be from 14.00 - 16.30 on Sunday the 28th and Monday the 29th of May at Quendon & Rickling Village Hall. Details for entry to the competition are downloadable from the Village Pump page at [www.quendonandrickling.co.uk](http://www.quendonandrickling.co.uk)**



## What's On

Where no organiser is shown for any event in Q&R Village Hall, contact the Hall Manager, Christine Osbourn on 01799 543367 for details

Event	Date	Time	Place	Notes
EXTEND Exercises	<i>Mondays</i>	10.30	Q&R Village Hall	Pat Turner 01799 543314
Saffron Searchers	<i>1st Monday in month -</i>		Q&R Village Hall	-
Dog Training	<i>Mondays</i>	-	Q&R Village Hall	Pauline Everton
Rainbows	<i>Mondays</i>	16.00-17.00	Q&R Village Hall	(Pre-Brownies)
Prayer Meeting	<i>Mondays</i>	16.30	Quendon Church	
Pilates	<i>Tuesdays</i>	09.00-10.00	Q&R Village Hall	Jan Crawley 077421 82272
Dance Exercise	<i>Tuesdays</i>	Morning	Q&R Village Hall	Christine Alexander
Dance Exercise	<i>Tuesdays</i>	Afternoon	Q&R Village Hall	Christine Alexander
Armadillos	<i>Tuesdays (term-time)</i>	09.00	Rickling School	Stevie Green 01799 542734
Carpet Bowls	<i>Wednesdays</i>	19.00	Quendon Bowls Club	David Edwards 01799 540167
Coffee Group	<i>3rd Weds in month</i>	10.00-12.00	Q&R Village Hall	Angela 01799 218061/Carol 543807
U3A Choir	<i>Wednesdays</i>	10.30	Q&R Village Hall	
Wednesday Club	<i>Wednesdays</i>	-	Q&R Village Hall	Christine Osbourn 01799 543367
Prayer Meeting	<i>Thursdays</i>	09.00	Rickling Church	
Line Dancing	<i>Thursdays</i>	-	Q&R Village Hall	Dawn Bond 01787 460274
Rickling Runners	<i>Thursdays</i>	19.30	The Green	Stevie Green 01799 542734
DiddiDance (2-4yrs)	<i>Fridays</i>	10.00	Q&R Village Hall	
Golf Society	<i>4th May</i>	12.00	John o'Gaunt GC	B Chapman <a href="mailto:pebbles4@btopenworld.com">pebbles4@btopenworld.com</a>
Local Elections	<i>4th May</i>		Q&R Village Hall	
Parish Council	<i>10th May</i>	19.30	Q&R Village Hall	
Coffee Club	<i>17th May</i>	10.00-12.00	Q&R Village Hall	
Quiz Night	<i>19th May</i>	19.30	Rickling School	See Ad p5
Photo Exhibition	<i>28th May</i>	14.00-16.30	Q&R Village Hall	See Ad p10
Photo Exhibition	<i>29th May</i>	14.00-16.30	Q&R Village Hall	See Ad p10
Coffee & Sale	<i>3rd June</i>	10.00-12.00	Q&R Village Hall	See Ad p5

## May 2017 at...

Aquarius (18)  
 The Lost City of Z (15)  
 Power Rangers (12A)  
 The Time of Their Lives (12A)  
 I Am Not Your Negro (12A)  
 Obsession – Barbican Theatre  
 Free Fire (15)  
 Smurfs: The Lost Village (U)  
 Mad To Be Normal (15)

Mon 1 8.00pm  
 Fri 5 8.00pm; Sun 7 8.00pm  
 Sat 6 3.00pm; Sun 7 2.00pm  
 )Sat 6 8.00pm; Sun 7 5.00pm  
 Mon 8 8.00pm  
 Thu 11 7.00pm  
 Fri 12 8.00pm  
 Sat 13 3.00pm; Sun 14 2.00pm  
 Sat 13 8.00pm; Sun 14 8.00pm



[www.saffronscreen.com](http://www.saffronscreen.com)

## May 2017 Continued



Another Mother's Son (12A)	Sun 14 5.00pm
Personal Shopper (15)	Mon 15 8.00pm
Ghost in the Shell (12A)	Fri 19 8.00pm
Peppa Pig: My First Cinema Experience (U)	Sat 20 3.00pm; Sun 21 2.00pm
Who's Afraid of Virginia Woolf? – Harold Pinter Theatre	Sat 20 7.00pm
Captain Phillips (12A)	Sat 20 7.30pm
Lion (PG)	Sun 21 5.00pm
A Quiet Passion (12A)	Sun 21 8.00pm
Graduation (15)	Mon 22 8.00pm
The Sense of an Ending (15)	Fri 26 8.00pm; Sat 27 8.00pm; Sun 28 8.00pm
The Boss Baby (U)	Sat 27 3.00pm; Tue 30 3.00pm
Cinema in the Square – Shaun the Sheep (U)	Sun 28 2.00pm
Antony & Cleopatra – RSC	Sun 28 3.00pm
Cinema in the Square – E.T. (U)	Sun 28 5.00pm
Molly Monster (U)	Mon 29 3.00pm; Wed 31 3.00pm
Letters from Baghdad (PG)	Mon 29 8.00pm
Their Finest (12A)	Tue 30 8.00pm; Wed 31 8.00pm

**Tickets: Eve:** Full price £7.90, 65 & over £7.10; Other adult conc: £6.10, 18 & under: £5.70 (£4.30 on Mon)

**Day:** Full price £6.90, 65 & over £6.00; Other adult conc: £5.30, 18 & under: £4.50, Family ticket £20.00

**For Special Event Tickets, please see website**

**Available from the Saffron Walden Tourist Information Centre, online at [www.saffronscreen.com](http://www.saffronscreen.com),  
or at the cinema Box Office (opens 30 mins before screening) at  
County High School, Audley End Road, Saffron Walden, CB11 4UH.**

THE LINK is produced on behalf of Quendon & Rickling PCC, who do not necessarily share or endorse any opinions expressed by contributors or advertisers.

THE LINK is delivered free of charge by volunteers to every household in the villages of Quendon and Rickling. It is also available by post and online at: <http://www.quendonandrickling.co.uk>

All correspondence for THE LINK should be addressed to the editor,

Robert Arnold: **preferably by e-mail with attachments if necessary: [robert@arnold-q.uk](mailto:robert@arnold-q.uk)**, or at Talbots, Cambridge Road, Quendon, CB11 3XJ; otherwise telephone 01799 543075

THE LINK is assembled using Scribus software and is printed through the generosity of

**ALTERNATIVE business solutions and services**

<http://www.alternative.uk.com/> E-mail: [info@alternative.uk.com](mailto:info@alternative.uk.com)

## Emergency Life-saving

Should someone suffer a cardiac arrest or show symptoms of a heart attack e.g. pains in the chest, then your first action should always be to phone the ambulance service on 999. The service will refer you to our Automated External Defibrillator which is at the front entrance to Quendon & Rickling Village Hall. Anyone can save a life by using it until an ambulance arrives. In addition you can seek help from any of the volunteers listed below.

Name	Home Telephone	Locality
Alan Price	01799 542527	Northern end - Cambridge Road
Jane Price	01799 542527	Northern end - Cambridge Road
Robert Arnold	01799 543075	Northern end - Cambridge Road
Chris Phillips	01799 542351	Middle - Cambridge Road
Sue Phillips	01799 542351	Middle - Cambridge Road
Nigel Ackerman	01799 540678	Middle - Cambridge Road
Anne Howes	01799 543545	Southern end – Cambridge Road
Sandy Turner	01799 540557	Rickling Green
Pat Turner	01799 543314	Rickling Green
Janice Hart	01799 541196	Rickling Green/Brick Kiln Lane/Rickling
Clare Willoughby	01799 543637	Rickling Green/Brick Kiln Lane/Rickling



For further information see [www.communityheartbeat.org.uk/](http://www.communityheartbeat.org.uk/)

**Remember: Using the defibrillator can't cause injury. Doing nothing can.**



## TONY WOOD

Qualified Registered Electrician

All electrical works undertaken

Re-wires, new circuits, extensions  
Replacement Consumer Units  
Electric showers, heating, additional sockets  
Internal and external lighting

Free advice & estimates  
References available  
Competitive rates  
Fully insured

Please ring Tony on  
07714 300920  
01279 455780

Or e-mail [camwoodhome@outlook.com](mailto:camwoodhome@outlook.com)  
Electrical Safety Register Approved Contractor

Electrical Safety  
Register

## CHIROPDIST

Mrs Julie Golden

HPC Registered/State Registered

Home Visiting Practice

Est.1994

**01279 873492**

Mobile 07916 075451

A professional service at a competitive price

# Binwash

We  
clean  
your  
Wheelie  
bins!



Commercial & Domestic

**FREE!**  
First Clean  
to new  
Customers

Monthly Cleaning from just **£3.50!**

- Professional equipment
- 4 weekly schedule or one-offs
- Same day as waste collection

[www.binwash-uk.com](http://www.binwash-uk.com)

**01799 529899**

[enquiries@binwash-uk.com](mailto:enquiries@binwash-uk.com)

## • CONNECTIONS CARS •

AIRPORT TRANSFERS • EXECUTIVE CHAUFFEUR • PRIVATE HIRE TAXI

OWNED AND OPERATED BY  
JOHN CAUSTON

(FORMERLY CLAWERING CONNECTIONS)  
SAME PRICES • SAME OWNERS • SAME CONTACT DETAILS  
• RELIABLE SERVICE • LUXURY VEHICLES •  
• FRIENDLY HELPFUL DRIVERS •

BOOK NOW FOR

- ASCOT, HENLEY & WIMBLEDON •
- STANSTED, GATWICK & HEATHROW •
- SPECIAL CELEBRATIONS •
- SHOPPING TRIPS & EVENINGS OUT •

PLEASE CALL US TO BOOK, OR FOR A QUOTE

**07855 859710 | 01799 550880**

[WWW.CONNECTIONSCARS.CO.UK](http://WWW.CONNECTIONSCARS.CO.UK)

PEASGOOD  
& SKEATES

THE  
FAMILY FUNERAL SERVICE

Arrangements can be made in the  
comfort of your own home

Private Chapels of Rest

Pre-paid funeral planning

*A personal caring service from a  
Local business, day or night*

Shire Hill, Saffron Walden

(01799) 523314

66b High St, Saffron Walden

(01799) 513513

46 Moorfield Rd, Duxford

(01223) 833463

[www.peasgoodandskeates.co.uk](http://www.peasgoodandskeates.co.uk)

**lawn  
partners**  
professional lawn care



**BESPOKE LAWN CARE  
SERVICES SINCE 2005**

Independent and family  
run, we put the care  
into lawncare

**01763 244955**  
**[lawnpartners.co.uk](http://lawnpartners.co.uk)**

Visit our website  
for lawncare advice  
& monthly seasonal tips

**B** building expertise

EXPERIENCED  
CHARTERED  
ARCHITECTS

Planning, Building  
Regulations  
Residential Extensions  
or New build houses  
Listed building approvals  
Free Initial Consultation  
Full or Part service.

**RIBA**   
Chartered Practice

We have specialist expertise  
in a number of areas  
including:

- interior design
- refurbishment
- extensions
- listed buildings
- landscape / garden design
- commercial office design
- cladding



Building Expertise Ltd  
Rural Barn Studio  
Church End  
Rickling  
Saffron Walden  
 Essex CB11 3YL

Tel: +44 (0) 1799 540 456  
Mobile: +44 (0) 7052 905469  
[simon@buildingexpertise.co.uk](mailto:simon@buildingexpertise.co.uk)  
[www.buildingexpertise.co.uk](http://www.buildingexpertise.co.uk)

Accreditations

**RIBA**   
Chartered Practice

CMAA

**THE  
ACADEMY  
EXPERTS**

CERTIFIED MEMBER



*Cwena Spa*  
by Karen Dovaston-Harris



Complete relaxation and rejuvenation in our unique Cwena Spa experience

- Hydrotherapy exercise Pool & Jacuzzi
- Steam room, Sauna and Relaxation beds
- Full range of beauty treatments
- Full range of advanced aesthetic treatments

To book call: 01799 541888  
visit: [www.karendovastonharris.co.uk](http://www.karendovastonharris.co.uk)  
or email: [beauty@karendovastonharris.co.uk](mailto:beauty@karendovastonharris.co.uk)

## CAMWOOD HOME IMPROVEMENTS

Bathrooms  
Kitchens  
Conversions

Fully Qualified Tradesmen  
All other aspects of building  
References available - Fully insured -  
Free advice & estimates - Competitive rates

Office: 01279 493780 Mobile: 07714 300920  
Email: [camwoodhome@outlook.com](mailto:camwoodhome@outlook.com)  
Website: [www.camwoodhome.co.uk](http://www.camwoodhome.co.uk)  
Electrical Safety Register Approved Contractor

## ina nelson electrical installer

Female Electrician  
• Electrical Installation  
• Fault Finding  
• Inspection & Testing  
• Certification  
C&G 2330, 17th Edition, C&G  
2391 Test and Inspection.  
Part P Registered. NIC EIC  
Approved Domestic Installer.

1, Bonnetting Lane, Tel: 01279 777357  
Berden, Mob: 07837 420647  
Bishops Stortford, [inanelson@hotmail.com](mailto:inanelson@hotmail.com)  
Essex, CM23 1AG



## Lower Street Clinic

36 LOWER STREET, STANSTED, ESSEX  
ESTABLISHED 1989

*Osteopathy,  
Cranial Osteopathy  
Aromatherapy,  
Homeopathy  
Flower Remedies  
Chiropody/Podiatry  
Infant Massage  
Instruction  
Pilates Instruction*

We have a specialist clinic for pregnant mothers, infants and children

FOR FURTHER INFORMATION  
OR TO MAKE AN APPOINTMENT,  
PLEASE TELEPHONE

**01279 815907**



## Electrician

All types of work carried out  
**Electrical contractor**  
**C D Collins**

Crofts View  
Newport Road  
Wicken Bonhunt  
Saffron Walden  
Essex, CB11 3UE  
Tel/Fax 01799 540194  
Mobile: 07831 131 754



- Boiler Servicing & Repairs
- Full Central Heating Systems
- Bathrooms
- Underfloor Heating
- Landlord's Safety Certificates

All work undertaken, fully insured & guaranteed



DD 01799 542920  
M 07816 355483



**Please mention**

**THE LINK**

**when responding to  
advertisements here.**

## NICK SHUTES PAINTING AND DECORATING LTD

High quality interior and  
exterior redecoration  
Woodwork repairs and  
replacement

Fascias, soffits and cladding

**01799 542385 or**

**07885 778213**

[www.nickshutesdecorating.co.uk](http://www.nickshutesdecorating.co.uk)

## Uttlesford Carers 'a caring hand in your community'

We offer help, support and advice to  
all carers over the age of 18

If you would like to know more please  
call 01371 875810 or e-mail  
[uttlesfordcarers@btconnect.com](mailto:uttlesfordcarers@btconnect.com)

Uttlesford Carers  
The Old Police Station  
45 Stortford Road  
Great Dunmow  
Essex CM6 1DQ  
Charity Number - 1154735



saffron walden's  
No.1 female  
village

**chimney  
sweep**

Office: 01799 540232  
Mobile 07930 347530

[villagechimneysweep.co.uk](http://villagechimneysweep.co.uk)



More than just a service



Heating



Plumbing



Renewables



Bathrooms

All Domestic & Commercial  
works undertaken

[www.shelfordheating.co.uk](http://www.shelfordheating.co.uk)

T: 01223 833426 E: [sales@shelfordheating.co.uk](mailto:sales@shelfordheating.co.uk)