

# The Link

Quendon & Rickling  
Parish  
and Church

You can find *The Link*  
and much more at  
[www.quendonandrickling.co.uk](http://www.quendonandrickling.co.uk)

## NEWS

December 2018

### In this issue

Church Contacts	2	Winter Fair Report	8
Police Contacts	2	100 Club	9
Vicar's Message	2	Book Club	9
Church Services	3	School	9
Community Café	3	District Council	10
Newport Teas	3	Golf Society	10
Parish Clerk	4	Parish Council Chair	11
Parish Council Meeting	4	Saffron Screen	12
Speed Watch	6	Emergency Life-saving	13
Crime Prevention	6	What's On	13
Hundred Parishes	8	Publication Details	14



Ray Hart  
Autumn Morning over The Green

Visits: If you would like the Vicar to visit you at home or in hospital, or know of anyone who would like him to visit them, please let the Vicar know.

**The Rev'd. Neil McLeod**, The Vicarage, 5, Meadowford, Newport, Saffron Walden, Essex, CB11 3QL

**Telephone:** 01799 540339 **E-mail:** [mcleod444@btinternet.com](mailto:mcleod444@btinternet.com)

## From the Vicarage Study

Rev. Neil McLeod,

Priest-in-Charge of Newport with Widdington, Quendon and Rickling.

So Christmas will soon be upon us with its festivities, shopping and trips to see family and friends. I wonder how you are holding up. For many, Christmas is a difficult time of year as they struggle to celebrate without a loved one with them. Christmas brings with it a multitude of stresses, whether it be what to buy for someone, or running out of time with the shopping, or what to cook on Christmas Day and on all of the days around it. I recall that when I was younger, Mum would go out and get a mass of food in, that looked like it was going to see us through to the new year. I love Christmas and I have already started my Christmas shopping – indeed I've almost finished. Just need to make time for wrapping parcels and arranging trips to see family and friends. Sometimes I wonder how I am going to fit it all in.



Yet, despite how much I love Christmas, sometimes it is easy for the true celebration of Christmas to get lost. It is not about the secular trappings of the season, although we love those things, but about a baby born in a stable over 2000 years ago. The prophet Isaiah, whose words are recorded in the Old Testament, which is before Jesus's birth, tells us that Jesus is the Prince of Peace. What does that mean for us? Is it just about peace in the world, and a longed-for hope of end to all conflict? It is that, but it is also about something else.

It is about peace in our lives, and in the midst of all the arrangements, struggles, sadness and chaos that there can be, leading up to Christmas, we could do with that peace. Not only do I believe, but I know, that Jesus can make a difference to our lives, because he has made a difference to mine. When things are difficult, I pray, and the problem doesn't always go away, but I have the strength or temperament to cope.

You can pray, but you can also come to church over the festive season. There is the Carol Service, Crib Service or Christmas Morning services to come to in the village, or there is the Midnight Communion at Newport Church. The times are elsewhere in this magazine. I hope that I will see you at one of those services, but I also hope and pray that you know the peace of the baby born in the stable.

*Happy Christmas!*

*Neil*

### **Priest in Charge of Newport with Widdington and Quendon and Rickling.**

The Rev'd. Neil McLeod, The Vicarage, 5, Meadowford, Newport, Saffron Walden, Essex, CB11 3QL

Telephone: 01799 540339 E-mail: [mcleod444@btinternet.com](mailto:mcleod444@btinternet.com)

**Churchwardens -** **Quendon:** Mrs Christine Osbourn 01799 543367 and Mrs Maureen Hawkins

**Rickling:** Lisa Huxtable 01799 542995

**Treasurer -** **Quendon and Rickling:** Mrs Sandra Arnold 01799 543075

### **Police contact information**

For crimes and suspicious activity NOW phone	999
For non-urgent incidents and reporting a crime that has already happened	101
Alternatively you can report non-urgent incidents or suspicious activity and crimes on-line at <a href="https://www.essex.police.uk/do-it-on-line/">https://www.essex.police.uk/do-it-on-line/</a>	
To give information <b>anonymously</b> phone CRIMESTOPPERS or report it on-line at <a href="http://www.crimestoppers-uk.org">www.crimestoppers-uk.org</a>	0800 555 111

## Church Services in the Benefice

### Sunday 2nd December (Advent Sunday)

9.30am Newport Contemporary Communion  
11.00am Widdington Christingle Service

### Sunday 9th December

8.30am Widdington BCP Communion  
9.30am Newport Morning Worship  
**11.00am Quendon BCP Communion**  
3.30pm Newport Messy Christingle

### Sunday 16th December

9.30am Newport Children's Nativity  
3.00pm Widdington Carol Service  
**6.00pm Quendon 9 Lessons & Carols**

### Sunday 23rd December

9.30am Newport Holy Communion  
**11.00am Rickling Holy Communion Service**  
6.00pm Newport Carol Service

### Christmas Eve

**3.00pm Rickling Crib Service**  
3.00pm Widdington Crib Service  
5.00pm Newport Crib Service  
11.30pm Newport Midnight Communion

### Christmas Day

9.00pm Newport Family Communion  
10.00pm Widdington Family Communion  
**11.00pm Quendon Family Communion**

### Sunday 30th December

10.00am Newport Holy Communion

### Sunday 6th January

9.30am Newport Contemporary Communion  
11.00am Widdington Family Service

### Sunday 13th January

8.30am Widdington BCP Communion  
9.30am Newport All Age Service  
**11.00am Quendon BCP Communion**

### Sunday 20th January

9.30am Newport Holy Communion  
11.00am Widdington Holy Communion  
**3.30pm Rickling Evening Prayer (Please note amended time)**

### Sunday 27th January

8.00am Newport BCP communion  
9.30am Newport Morning Worship  
**11.00am Rickling Holy Communion**  
3.30pm Newport Messy Church

**In addition to these services, prayer meetings are held as follow:**

Quendon, Mondays 4 30 pm  
Rickling, Thursdays 9 00am  
Widdington, Tuesday 9 00am  
Newport, Wednesday 4 30 pm.

## Rickling/Quendon Community Café

### Quiz and Fun Bingo

Wednesday 19th December 2018

10.00 am – 12.00 pm



**Please contact: Angie and Carole**

**01799 543807/218061**

**Quendon & Rickling Village Hall,**

**Quendon, CB11 3XQ**

**Dates of future Coffee Mornings**

**16th January 2019    20th February 2019**

**20th March 2019    17th April 2019**

**all 10.00-12.00**



## Newport Community Café

**Newport United Reformed Church**

**55 Wicken Road, Newport,**

**Saffron Walden, Essex. CB11 3QF**

**Tuesday 11th December**

**2.00 pm – 4.00 pm**



Future Dates:

15th January 2019;      29th January 2019;

12th February 2019;    26th February 2019;

12th March 2019;      26th March 2019 ;

9th April 2019;      30th April 2019.

Contact : Carole or Angela on 01799 543807/218061 for more info.

email : [angiecallahan@aol.com](mailto:angiecallahan@aol.com)



## Quendon & Rickling Parish Council News

### What goes around comes around

We've had Halloween, Bonfire Night and soon it will be Christmas. Which means that Easter eggs and hot cross buns will be in the shops any day soon. Shop early to avoid disappointment.

### The Precept

It is about this time of the year that parish councillors' thoughts begin to turn to the precept requirement. This is the annual sum that the Council requires to carry out its responsibilities. Your Parish Clerk in his role as Responsible Financial Officer will present budget figures to the Council, with a recommendation for the precept, for their consideration. Councillors will then be asked to agree the precept, or make any amendments as required, at the monthly meeting on 12th December.

### Broadband

Well, you certainly know that Gigaclear has been in action. Either that or Quendon and Rickling breeds some mighty powerful moles. It does look as if it is only a matter of time now before high-speed broadband finally hits the whole of the village. So when you send that photograph of granny's birthday party to the family, you won't need to go off and make tea and toast whilst the photo is uploading. Although you still can if you want to.

### Street lighting

The light experiment has been very successful (see minute 289 from the 10th October meeting) and further lights will be installed when placements are agreed.

### Publication of minutes

In addition to posting minutes to the website, they have also been posted to the noticeboards. Bearing in mind that some minutes can take up to five or more pages, and there are three noticeboards. Well you do the maths. That is an awful lot of trees. I hope residents appreciate the initiative to cut down on paper by only posting minutes to the website. If this is a problem then please let me know. But I guess we should all try to do our bit.

As Mr Tesco says, "Every little helps". The agendas will continue to be posted to the noticeboards.

### New parish councillor

Mr Edward (Ted) Crow has been co-opted as a welcome addition to the parish council. He will initially take responsibility for the football pitch but I am sure he will acquire other duties as the time progresses. I have no doubt his contribution will be gratefully appreciated.

### Welcome Packs

The Parish Council provides a Welcome Pack of information for new residents to the Village. If any newcomers to the village have not received a copy of the pack, do please let the Clerk know on the contact details below and a welcome pack will be dropped off to them.

### Next Parish Council Meeting

Will be on 12th December at 7.30pm

### Highway Problems

The Essex Highways website is available for anyone noticing a problem to report it: <http://www.essexhighways.org/Report-a-problem.aspx>

A tracking facility for all reported faults is available.

### Police/Crime

The Essex Community Messaging Service provides useful information to the public about policing and safety issues. It is free to register and information is given relative to your postcode, thus providing accurate and up-to-date community safety information and crime prevention advice. Users can choose to receive information via e-mail, text or voice-recording and can select what information to receive – based on where they live and work and on issues of interest. For further details and to sign up, visit [www.essex.police.uk/ecm](http://www.essex.police.uk/ecm)

### Contact the Parish Council

The Clerk, Keith Williams can be contacted by e-mail [quendonandrickling.clerk@hotmail.com](mailto:quendonandrickling.clerk@hotmail.com) or by telephone 01279 814473

## **Parish Council Meeting 14th November**

***Please note that these are not approved formal minutes.***

The presence of seven members of the parish public, as well as our County Councillor helped to enliven the Parish Council ("PC") meeting on the 14th of November, when Ted Crow was co-opted as a new member of the council. He is a familiar figure at village events and brings to the council not only his practical and organisational skills as a successful degree-qualified businessman, but also his experience in the formation of a football club and as a Football Association coach and referee.

**The Parish Council is still one member short of full membership and anyone interested in contributing to the conservation and improvement of Quendon and**

**Rickling villages is encouraged to contact the Parish Clerk, whose contact information is given in his regular panel above in this issue.**

Other topics discussed at the meeting included the following.

1. Some local newspapers have recently been simply left on walls and paths instead of being properly inserted completely through letter-boxes. Attempts by residents to persuade both the publishers of the papers and their distribution agents to correct this have been unsuccessful, and the Council will therefore add its weight to their efforts.
2. Andrew Thomson is to be the new co-ordinator of our defibrillator team and contact information is included

## Parish Council Meeting 14th November (cont.)

as usual in the panel towards the end of *The Link*. Andrew will be delighted to hear of anyone else interested in being authorised to use the device.

3. As noted elsewhere, 10 members of the parish recently attended Speedwatch training, and the Parish Council together with the County Councillor is to investigate the feasibility of providing the team with a video camera to help identification of speeding vehicles. There are data privacy issues to be considered, as well as the cost.
4. Mention was made of interest being shown by Strutt & Parker (agents for the Quendon Estate) in development of a land site adjacent to the football field. Though the Council is aware of this and of other similar sites of interest, no formal planning application has been made. These sites remain under discussion by the Neighbourhood Plan Steering Group as part of their formulation of the Neighbourhood Plan. The Parish Council Chairman is a member of the Steering Group, which intends shortly to submit the draft Plan to Uttlesford District Council.
5. The Council has been looking into the use of traffic speed limit roundel stickers on our wheelie bins. The cost and funding of this will be discussed at the next PC meeting, as well as how to gauge interest in their use.
6. As mentioned previously in *The Link*, the PC has signed a 20 year lease of the football field and Mr Crow will be bringing his experience to its management and use. As the former groundsman has declined to continue his upkeep of the field, there will need to be further discussion in the future about its maintenance. Vandalism of the buildings on the field was reported, and they are in a potentially dangerous condition, but the PC has not adopted responsibility for them and it is presumed that they will be demolished in due course. Though the water and electricity supplies to the field have been terminated, it is hoped to make some form of sanitary facility safely available in the future. Sport England was identified as a potential source of assistance with these projects. The question of right of access over private land to the field requires investigation. The PC will also apply for the field to be included on the register of Assets of Community Value. The PC will discuss with members of the school their possible use of the field, as the school's own space is limited.
7. Earlier in the year the PC made donations to the Parochial Church Council ("PCC") but some misunderstanding concerning their precise use needs to be discussed further with the PCC.
8. The additional environmental lighting installed in the Coney Acre area seems to be satisfactory and residents will be consulted as to whether more is

needed.

9. County Councillor Gooding mentioned matters relating to the provision and use of public lending library facilities. The County Council is keen to maintain them where possible but declining use puts this at risk. It is hoped that Cllr Gooding will be able to provide advisory and promotional material for inclusion in these pages.
10. The PC has adopted the revised code of conduct recommended by Uttlesford District Council and a hyperlink to it will be included on the web-site for anyone interested to read it.
11. The velocity/vehicle-activated speed sign at the north end of Quendon was reported not to be very bright and though some suggestions were made as to the reasons, it was uncertain what could be done about it.
12. The 'bus stop near the entrance to Belchams Lane was again mentioned as a hazard to users on account of the speed of passing traffic and poor visibility. County Councillor Gooding announced that steps are being taken to extend the 30mph envelope further, but that inclusion of footpath extensions could not be included in this year's budget. It is hoped to include them in next year's budget.
13. Two planning applications were discussed, one of which, for secondary double glazing in a listed building, was uncontroversial, but while the other would not be opposed, comments would be offered on aesthetic grounds.
14. Finally a member of the public asked whether the use of a group e-mail communications from the Clerk had been terminated. Due to fears created by the General Data Protection Regulation, it had been paused pending renewed expressions of interest by users. Though advice about this had appeared in the Parish Clerk's panel in a previous issue of *The Link*, there was only one response. The Clerk uses the notice boards for Parish Council matters but as it cannot be expected for us to read them every day (!) the Clerk can maintain a list of e-mail addresses of residents wishing to be kept informed of Council activities and other urgent events. This can be especially useful for those of us reluctant to use media such as Facebook. Maintenance of such a list now requires individuals' specific consent.

**If you wish to be kept informed of important/urgent events, apply to the Clerk to be included (see his panel elsewhere in these pages for his contact details).**

The next Parish Council meeting is fixed for 19.30hrs on Wednesday the 12th of December in the Men's Room (the small one) at the Village Hall.

***Everyone in Quendon and Rickling is welcome to come along to find out what is happening.***

*Robert "Scoop" Arnold, Editor*

## 5 Tips to Fight Crime – Christmas



Have you seen Essex Police's current crime prevention campaign? The current campaign under the name "Let's Talk about Crime" features five tips on eleven different crime types such as: Home Security, Garden Security, Cybercrime etc. These are available on the Essex Police webpage below, Social Media and as leaflets. As an example below are 5 tips for a crime free Christmas.

1. Don't leave Christmas presents or valuables in view of a window. Keep them out of sight from thieves. If you are storing items in a shed or outbuilding, secure them by fitting good quality locks and considering an alarm.
2. If you're attending a Christmas party, make sure that you have considered how to get home in advance and don't use unlicensed taxis. Ensure you drink responsibly and are aware of your surroundings, whilst keeping your drink and belongings safe. For personal safety advice visit: [www.suzyplamplugh.org](http://www.suzyplamplugh.org)
3. Whether you're on an evening out, or Christmas shopping, keep your bags, handbags, wallets and mobile safe. Busy places make it easier for the sneak thief, so be alert at all times.
4. Record your valuables and property serial numbers by using [www.immobilise.com](http://www.immobilise.com) - a free property recording website that helps the police identify owners of recovered property every day. On the site you can create a private and secure log of all your personal property including adding photographs.
5. After Christmas don't advertise your nice gifts to the thieves by putting the empty boxes out for collection. Disguise them, fold them inside out or put them inside other plain boxes.

Christmas is fast approaching, for more information about how to keep yourself and your property safe visit: [www.essex.police.uk/letstalk](http://www.essex.police.uk/letstalk)

We wish you all a happy and crime free Christmas and New Year.

SJAS 051118

## SILENT AUCTION

**We have two wonderful items for this year's fundraising silent auction.**

Kindly donated by Saffron Walden Golf Club is a voucher for a '4 Ball'; this will give 4 players a round of golf at this wonderful Golf course. What a fabulous Christmas gift!



Our second auction item is this original artwork from one of our talented residents, a unique representation of Quendon and Rickling village.



Interest for either item can be registered with me via the village Facebook pages, directly on 01799 542095 or you can view at our Winstanley Celebration on the 2nd December at Rickling Church.

All proceeds will be going towards the continuing work on the Village Hall, our memorial to the men of Quendon and Rickling who served in the First World War.

*Tracey Hepting*

## SPEED WATCH

Speed watch training took place in Quendon village hall on the 14th November, we had 10 volunteers from Quendon which was fantastic, but it's not too late to register your interest for further training sessions.

A recent speed watch exercise recorded 66 vehicles significantly exceeding the 30mph restriction in under 2 hours. We have a growing number of school children in the village who need to cross this road safely to get to and from school; we also have a number of our more elderly residents who simply find it too difficult to navigate the road with the vehicles regularly travelling at speeds recorded in excess of 70mph. Also worth mentioning is the growing number of wildlife and domestic pet fatalities recorded.

Any time given as a volunteer would make a difference and the more volunteers we have the less time individuals would need to give.

We particularly need volunteers who can do morning slots as the team members we have already all work full time.

You can register your interest with

[community.speedwatch@essex-fire.gov.uk](mailto:community.speedwatch@essex-fire.gov.uk)



# TOM'S TREES

**PREMIUM QUALITY NORDMANN FIR CHRISTMAS TREES**

**Unbeatable prices!**

**At  
TERRACE & GARDEN  
RICKLING GREEN  
CB11 3YG**



**EVERY DAY 11-4 from 29<sup>th</sup> November  
WHILE STOCKS LAST**

**01799 543289**

**[info@terraceandgarden.com](mailto:info@terraceandgarden.com)**

**Free delivery to local area**



## Winter Fair

Thank you to all who presented stalls and supported the fair on Sunday the 18th of November. It was a place to look at the variety of stalls, buy some gifts for Christmas and also to stop and chat over the items and some refreshments. The event raised over £500.



[www.hundredparishes.org.uk](http://www.hundredparishes.org.uk)

## THE HUNDRED PARISHES SOCIETY

**M**istletoe has become a symbol for the festive season.

Large clusters of pale green mistletoe are revealed as the leaves fall in November from the branches of apple, hawthorn, lime and poplars. This semi-parasitic plant takes water and some nourishment from the host tree.

Clumps producing the sticky white berries are often guarded by Mistle Thrushes as the berries attract other species eager to eat them. The seeds are spread from tree to tree as the birds try to remove the sticky flesh from their beaks and wipe them on a suitable branch. Germination is slow, but once established the clumps grow larger year on year and in some cases seem to overwhelm the host tree.

As a plant which is sensitive to the chill of winter, mistletoe is rapidly becoming well established in the eastern regions of England as our winters are tending to become warmer. Festoons of mistletoe on suitable trees



can be seen in parts of our local area including Hatfield Forest, Saffron Walden, Quendon, Newport and other villages.

There are many seasonal traditions associated with this intriguing plant which was thought to have magical powers especially if found growing on Oaks. Within many European cultures its evergreen boughs were used to symbolise eternal life. Mistletoe and holly were used to decorate houses during the time of the winter solstice to remind people that the circle of life would continue. Mistletoe came to symbolise good luck and love in life.

If you need inspiration for a Christmas present, please consider the Society's book, "**The Hundred Parishes: An Introduction**". It can be purchased at local Tourist Information Centres and some local bookshops. The principal author, Ken McDonald, will be on hand to sign copies at Saffron Walden TIC on Saturday, December 1st between 10:30am and 12:30pm.

**Tricia Moxey, Trustee**



## Quendon & Rickling 100 Club

Congratulations to this months winners!

Ball 41.....£35.00.....Mr Job Tissot

Ball 50.....£25.00.....Miss Suzanne Hawkins

Ball 100....£15.00.....Mrs Sylvia Cundy

**Would you like to join us too?**

**Please phone Clare, 01799 543637.**

## Quendon & Rickling Book Club!

We have recently started a small book club open to all villagers, which we are holding every month (ish) in The Cricketers.



Our next meeting is 3 December at 8pm with the book "Only Child".

For the January meeting on the 29th of January, we shall be reading the book "This is going to hurt" by Adam Kay.

***No fuss, just come along at 8pm!***



## News from Rickling School



Maple and Beech attended a talk on plastic recycling given by Becky Lockwood of Uttlesford District Council. They learned which plastics could be recycled and how to avoid the ones that would go directly into landfill. They also learned that plastic never dissolved but just became smaller and smaller, eventually becoming microplastics. Doing the Maths afterwards, they realised that the school produced over 85,000 wrappers a year and it has inspired them to think carefully about their break time snacks.

This week in Beech we have started the section 'Where Does All That Food Go?' This involves learning about digestion so the class modelled the process using a piece of bread. First the bread was sprayed, to imitate the saliva in our mouths and then it was broken up by 'teeth' or Mrs Snelling! The next stage



was fun as the whole class took part in squeezing and breaking up that happened in our stomachs (plastic bag). The class then went outside to see how long our small intestine is - in fact Mrs Snelling did not have enough tubing! The large intestine was another bag but

this time small holes were made by pins to show that the water and salt would be taken out at this point. Finally the waste went in the bin and we all knew what that represented!



**Acorn Class Bear Hunt and Lamp-making**



**Oak Class Practical Arithmetic**



**Maple Remembrance Slam Poem Performance**

### **The Rickling round up...(9th November)**

Dear Parents

It's been a busy and productive two weeks at Rickling! The new half term has started well and the children have been working hard. There have been some changes to the way that we use the playground in the winter months - the area for playing football has temporarily reduced - and the children have dealt with this maturely and sensibly. They are a credit to our school!

We had a visit from Uttlesford District Council to talk about recycling which links in well with our Courageous Advocacy Project - Plastic and our Seas. Our Agents for Change suggestion box in the hall is full with suggestions for things that we can improve around school and projects that we can instgate and help with.

Maple class have been working hard to get ready for their Remembrance Service today and all classes have been learning about the signficance of wearing a poppy. Miss Harley talked about remembering the fallen during her assembly and we paused for a minutes silence to remember.



It was lovely to see the children having their photographs taken both with their siblings and individually - details will follow soon on how to order these prints.

**Gt-Gt-Grandfather in WWI**

Enjoy a restful weekend,

Kind Regards, Mrs H Wheatcroft

## Quendon & Rickling Golf Society

Fifteen of us met on Friday November 2nd, a wonderful warm Autumnal morning for the annual visit to Bishop's Stortford Golf Club organised by Richard and Susie Hartley. Everyone was in good spirits, catching up with the gossip and enjoying their pre golf breakfast of Bacon Rolls and Coffee.

Welcomed by Susie to the event she explained that they would be playing a team game in teams of 3, with the best two scores to count on all holes, but as a twist, all scores to count on the tricky par 3s. The golfers then set off to enjoy the last of the sun's warmth and beautiful colours of the fading trees.

Several hours later the golfers returned to the welcoming club house to start their stories of what might have been and missed opportunities. Soon, lunch was served. The Club had kindly laid up one large table so we could all sit together and fortify ourselves with much appreciated ham egg and chips.



Lunch finished, so the prize winners were announced with First prize going to the team of Ian Ritchie, Chris Howarth and his guest for the day Chris Rix. In Second place were Ray Hart, Tony Knight and Brandon Chapman.

Alan Price was nearest the pin on the 8th and Ray Hart was nearest the pin in two on the 14th.

Finally, Bishop's Stortford Golf Club kindly donated a two ball voucher which was won by Jan Rackham and the profits from this raffle will be donated to our Quendon and Rickling Churches.

Before everyone departed, tired but happy, after a great day out, the date for next

year's return visit to Bishop's Stortford was agreed as Friday 8th November 2019. Many thanks go to Susie and Richard for another great day at their lovely club.

## Report from District Councillors Anthony Gerard and Neil Hargreaves

### The Stansted Airport decision

The application to expand the airport to about the capacity of Gatwick was approved by the UDC Planning Committee on 14th November. The votes were 5 for and 5 against and it was approved on the Chair's casting vote.

I thought it might be illuminating to see the detail of just one issue. The council and the government have clear environmental policies which we are required to apply to planning decisions. UDC policy ENV13 says

*'Development that would involve users being exposed on an extended long-term basis to poor air quality outdoors near ground level will not be permitted. A zone 100 metres on either side of the central reservation of the M11 and a zone 35 metres either side of the centre of the new A120 have been identified. ...as particular areas to which this policy applies.'*

The National Planning Policy Framework, paragraph 181, requires us to consider the cumulative effect of air pollution. This means it is not a defence to say 'it is already illegal, so this application making it worse doesn't matter'

Our air pollution comes from mostly traffic. There are three types of air quality computer model. One is for rural areas, one for airports and one for towns. The airport application only used the airport version. This is not correct for the surrounding settlements or the M11 and A120. The model used therefore treated Bishop

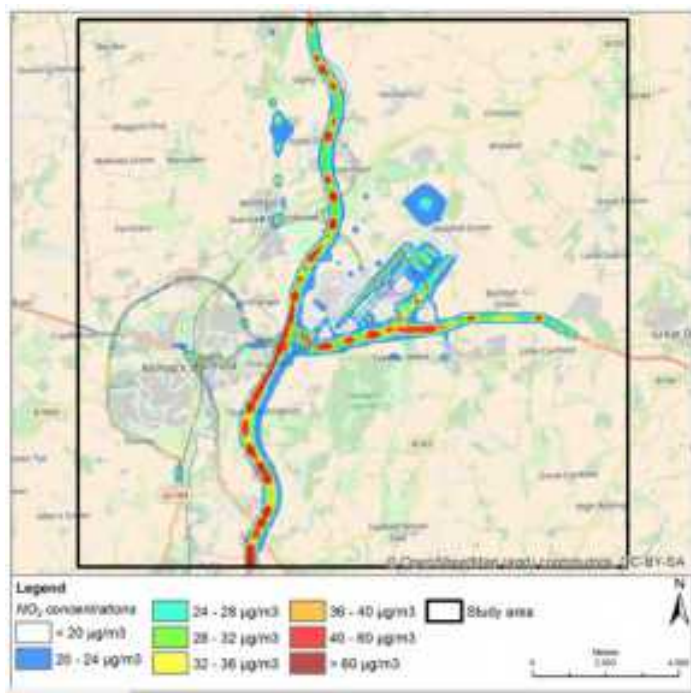
Stortford as a wide open space. The actual tube readings in Stortford show traffic pollution far worse than anywhere in Uttlesford – nitrogen dioxide (NO<sub>2</sub>) 70 mcg per m<sup>3</sup>, way above the legal maximum of 40. But the modelling in the application shows only around 25 mcg and mostly no pollution at all. It is grossly inaccurate. The correct model had not been used and this applies to all the nearby settlements.

What about rural areas? The application claims that current pollution is well below the limit. It quotes a monitor at Burton End. I have the UDC figures for this back to 2013 and every year the NO<sub>2</sub> is close to the legal maximum – in 2016 it was illegal at 43 mcg. The 2017 figure only escaped also being reported as illegal because UDC failed to maintain their calibration equipment and so a much weaker national calibration had to be applied. This tube is near the bridge over the M11 on the road past Forest Hall School. Because it is 27m from the motorway, they reduced the reported figure. The ludicrous assumption is that all the pollution is created on the lane and not on the M11. To get a figure for the motorway the reported figure should be increased, not decreased.

This is confirmed by the air quality modelling in the application which shows the pollution on all of the M11 and the A120 corridors is illegal right now. See map below – the red areas are illegal – this is the 2016 modelling.



## Report from District Councillors Anthony Gerard and Neil Hargreaves (cont.)



On the airport itself the application says that NO<sub>2</sub> pollution will increase by 58%, and the carbon particulates will increase by 56%. But this is mostly from vehicles, not aircraft. These are the deliveries, passengers and airport staff. These vehicles drive round the whole district not just on the airport. But the application claims that hardly any extra airport traffic will be in Stortford. And on many surrounding streets according to the traffic assessment there is, and will not

be, any airport related traffic at all. Lower Street in Stansted is one of many examples in the report. This is the rat run from the B1383 to the long stay car park. The application wrongly assumes no airport traffic and so wrongly ignores air pollution

The traffic assessment however does say the airport expansion will add 5,800 more vehicles a day onto the M11 and 8,350 more on the A120. This is additional to significant traffic growth from other sources. The air assessment factors in 8 local housing sites near the airport, but gives no weight to sites further away on the same roads, and the Local Plan with its three big new settlements is ignored for all purposes.

It is clear therefore that in Stortford and on the M11 and the A120 this permission will directly result in more pollution added to zones which are already illegal. So it is not compliant with local or national planning policy, or the Environment Act 1995. Five councillors did not consider this a valid reason to refuse the application. It was an 8 hour meeting and one councillor (a Conservative) said not one word throughout.

### Councillors Surgeries

We are available every Thursday morning from 10.30 to 11.30 in Dorrington's in Newport and we take turns to attend the parish council meetings in the Village Hall. We are also active on the two main village Facebook groups.

*Neil Hargreaves*

## From The Parish Council Chair

As you read this, the Festive Season will be close at hand and winter snapping at our fingers and toes. This time of year causes many of us to reflect on the past 12 months and look towards the coming New Year. The Chairman's annual report in May is the time for the Parish Council to review the past year, but I thought that I would take this opportunity to present some thoughts.

Over the last few months our village has gone through a bit of an upheaval as Gigaclear lay their cables to provide a superfast broadband service. Whether you wish to take up this facility or not, we have all at some point been inconvenienced by this disruption either from the noise of equipment, verges being dug up, or blocked pavements and roads. Unfortunately, we may have to accept this ongoing work in the hope that the result will be a better service, as more and more of us rely on our computers. Just to remind you, that we are still trying to obtain information from BT about their plans for the village but whatever these may be, let us hope that they will not be quite so disruptive.

One of the reasons for bringing this matter up is to reflect on the parish as a whole, and here I will give two examples. I often hear people remark that this is a great

place to live, and I agree wholeheartedly, but it is up to us to keep it looking in fine order. True to say, some good work has been undertaken by the Highway Rangers and there are a few more jobs that we would like them to do, but all of us, both residents and visitors, can play our part. Litter, for example, is a perennial problem and should not be dropped in the first place, but for whatever reason, we find it scattered around the village. I know that some of you see this as a responsibility and clear up what you can. However, we can all help by just putting that odd bag or wrapper in the bin. Of course, we have to be careful, but at this time of year the litter can be easily spotted and we are more likely to be wearing gloves for protection. The second thought is on our cars! We just cannot do without them and they are an essential facility for a rural community such as ours, but let's park responsibly so as to allow others to pass in safety. And do keep off those verges, especially around the Village Green where the edges are slowly being eroded.

I am very keen that we encourage as many people as possible to enlist in helping within our community. Many already have, and I hope many more of you will volunteer in the future. Next May will bring our local



### From The Parish Council Chair (cont.)

elections and I would ask that you consider putting your name forward for election to the Parish Council. We are already one person down and hope to make up this number up as soon as possible. I am sometimes surprised that a few people are unaware of the Parish Council and what we do in the community. Perhaps we need to review our communications, but with monthly Parish Council meetings, Facebook, The Link and Village

Notice Boards, we can only hope that the messages get through. Being on the PC has its rewards and at times a few tribulations, but overall it is a tremendous way of becoming more involved in the community and contributing skills that we all have. Do think about it!

May I take this opportunity to wish you all A Merry Christmas and a very happy and peaceful 2019.

Brandon

### Advertising in *The Link*

reaches every household in Quendon and Rickling at attractive rates.

It could be promoting YOUR business.

Contact:

Advertising on telephone 01799 543297 or

The Editor, preferably by e-mail with attachments as necessary at [robert@arnold-q.uk](mailto:robert@arnold-q.uk);  
otherwise telephone 01799 543075.

## December 2018 at...



Bohemian Rhapsody (12A)  
Smallfoot (U)  
The Big Bad Fox and Other Tales (U)  
White Christmas (U) *Dementia-friendly screening*  
Utøya – July 22 (15 tbc)  
Antony & Cleopatra *National Theatre*  
Widows (15)  
The Nutcracker and The Four Realms (PG tbc)  
The Nutcracker *Royal Opera House*  
The Workshop (L'atelier) (15)  
First Man  
Suspiria (18)  
La Traviata Metropolitan Opera  
Wildlife (12A)  
Peterloo (12A)  
Slaughterhouse Rulez (15 tbc)  
Fantastic Beasts: The Crimes of Grindelwald (12A tbc)  
Fantastic Beasts: The Crimes of Grindelwald (12A tbc)  
Juliet, Naked (15)  
The Grinch (PG tbc)  
Monty Python and The Holy Grail (12A)  
Robin Hood (12A)  
The Girl in the Spider's Web (15 tbc)

Fri 30th Nov, Sat 1st, Sun 2nd & Wed 5th 8pm

Sat 1st 3pm

Sun 2nd 11am

Sun 2nd 3pm

Mon 3rd 8pm

Thurs 6th 7pm

Fri 7th, Sat 8th & Sun 9th 8pm

Sat 8th 3pm, Sat 15th & Sun 16th 2pm

Sun 9th 2pm

Mon 10th 8pm

(12A) Tues 11th 8pm

Fri 14th 7.30pm **Note start time**

Sat 15th 5.55pm

Sun 16th 5pm, Wed 19th 8pm

Sun 16th 8pm, Mon 17th 7.30pm

Fri 21st 8pm

Sat 22nd 3pm, Wed 26th 3pm & 8pm

Thurs 27th, Fri 28th & Mon 31st 3pm

Sat 22nd & Sun 23rd 8pm

Sun 23rd & Mon 24th 3pm

Thurs 27th 8pm

Fri 28th 8pm, Sat 29th & Sun 30th 3pm

Sat 29th & Sun 30th 8pm

[www.saffronscreen.com](http://www.saffronscreen.com)

**Evenings:** Full price £8.20, 65 & over £7.50, other adult conc: £6.10, 16-30: £5.50, under 16s: £5.70 (30 & under £4.50 on Mon)

**Daytime:** Full price £7.10, 65 & over £6.20, other adult conc: £5.30, 16-30: £5.00, under 16s: £4.50, family ticket: £20.00

**Event Cinema and Pop-ups:** See our website for prices

Available from the Saffron Walden Tourist Information Centre, online at [www.saffronscreen.com](http://www.saffronscreen.com),

or at the cinema Box Office (opens 30 mins before screening) at

County High School, Audley End Road, Saffron Walden, CB11 4UH.

## What's On

Where no organiser is shown for any event in Q&R Village Hall, contact the Hall Manager, Christine Osbourn on 01799 543367 for details

Event	Date	Time	Place	Notes
EXTEND Exercises	<i>Mondays</i>	10.30	Q&R Village Hall	Pat Turner 01799 543314
Saffron Searchers	<i>1st Monday in month-</i>		Q&R Village Hall	-
Dog Training	<i>Mondays</i>	-	Q&R Village Hall	Pauline Everton
Rainbows	<i>Mondays</i>	16.00-17.00	Q&R Village Hall	(Pre-Brownies)
Prayer Meeting	<i>Mondays</i>	16.30	Quendon Church	
Pilates	<i>Tuesdays</i>	09.00-10.00	Q&R Village Hall	Jan Crawley 077421 82272
Dance Exercise	<i>Tuesdays</i>	Morning	Q&R Village Hall	Christine Alexander
Dance Exercise	<i>Tuesdays</i>	Afternoon	Q&R Village Hall	Christine Alexander
Armadillos	<i>Tuesdays (term-time)</i>	09.00	Rickling School	Stevie Green 01799 542734
Coffee Group	<i>3rd Weds in month</i>	10.00-12.00	Q&R Village Hall	Angela 01799 218061/Carol 543807
U3A Choir	<i>Wednesdays</i>	10.30	Q&R Village Hall	
Wednesday Club	<i>Wednesdays</i>	-	Q&R Village Hall	Christine Osbourn 01799 543367
Carpet Bowls	<i>Wednesdays</i>	19.00	Quendon Bowls Club	David Edwards 07804 954095
Prayer Meeting	<i>Thursdays</i>	09.00	Rickling Church	
Line Dancing	<i>Thursdays</i>	-	Q&R Village Hall	Dawn Bond 01787 460274
Rickling Runners	<i>Thursdays</i>	19.30	The Green	Stevie Green 01799 542734
Social Evening	<i>Fridays</i>	19.00	Quendon Bowls Club	David Edwards 07804 954095
Whist Drive	<i>1st &amp; 3rd Sats</i>	19.30	Quendon Bowls Club	Tony Green 01799 218796
Winstanley Day	2nd December	14.00-17.00	Quendon Church	
Book Club	3rd December	20.00	Cricketers Arms, Rickling	
BCP Communion	9th December	11.00	Quendon Church	
Community Café	11th December	14.00-16.00	Newport UR Church	
Parish Council	12th December	19.30	Q&R Village Hall	
9 Lessons & Carols	16th December	18.00	Quendon Church	
Coffee Morning	19th December	10.00-12.00	Q&R Village Hall	
Holy Communion	23rd December	11.00	Rickling Church	
Crib Service	24th December	15.00	Rickling Church	
Family Communion	25th December	11.00	Quendon Church	

## Emergency Life-saving

Should someone suffer a cardiac arrest or show symptoms of a heart attack e.g. pains in the chest, then your first action should always be to phone the ambulance service on 999. The service will refer you to our Automated External Defibrillator which is at the front entrance to Quendon & Rickling Village Hall. Anyone can save a life by using it until an ambulance arrives. In addition you can seek help from any of the volunteers listed below.

Name	Home Telephone	Locality
Alan Price	01799 542527	Northern end - Cambridge Road
Jane Price	01799 542527	Northern end - Cambridge Road
Robert Arnold	01799 543075	Northern end - Cambridge Road
Andrew Thomson	01799 543253	Northern end - Cambridge Road
Chris Phillips	01799 542351	Middle - Cambridge Road
Sue Phillips	01799 542351	Middle - Cambridge Road
Nigel Ackerman	01799 540678	Middle - Cambridge Road
Anne Howes	01799 543545	Southern end - Cambridge Road
Gemma C.	01799 540358	Southern end - Cambridge Road
Sandy Turner	01799 540557	Rickling Green
Pat Turner	01799 543314	Rickling Green
Janice Hart	01799 541196	Rickling Green/Brick Kiln Lane/Rickling
Clare Willoughby	01799 543637	Rickling Green/Brick Kiln Lane/Rickling



For further information see [www.communityheartbeat.org.uk/](http://www.communityheartbeat.org.uk/)

**Remember: Using the defibrillator can't cause injury. Doing nothing can.**



**Advertising in *The Link* really gets your message out!**  
**One of the reasons firms stop advertising here is that they don't need to do so any more.**

**It could be promoting YOUR business**

**Contact: Advertising  
 on telephone 01799 543297**

**or The Editor**

**preferably by e-mail at**

**[robert@arnold-q.uk](mailto:robert@arnold-q.uk),**

**otherwise telephone 01799 543075**

*The Link* is produced on behalf of Quendon & Rickling PCC, who do not necessarily share or endorse any opinions expressed by contributors or advertisers.

*The Link* is delivered free of charge by volunteers to every household in the villages of Quendon and Rickling. It is also available by post and online at: <http://www.quendonandrickling.co.uk>

All correspondence for *The Link* should be addressed to the editor,

Robert Arnold: **preferably by e-mail with attachments if necessary: [robert@arnold-q.uk](mailto:robert@arnold-q.uk)**, or at Talbots, Cambridge Road, Quendon, CB11 3XJ; otherwise telephone 01799 543075

**Copy for each month is normally required by the 19th of the preceding month to allow for assembly, printing and delivery.**

*The Link* is assembled using Scribus software and is printed through the generosity of

**ALTERNATIVE Managed Services**

<http://www.alternative.uk.com/> E-mail: [info@alternative.uk.com](mailto:info@alternative.uk.com)

**• Boiler Servicing & Repairs**  
**• Full Central Heating Systems**  
**• Bathrooms**  
**• Underfloor Heating**  
**• Landlord's Safety Certificates**

All work undertaken, fully insured & guaranteed

DD 01799 542920  
 M 07816 355483

**safe**

**Advertising in  
*The Link*  
 reaches every household in  
 Quendon and Rickling at  
 attractive rates**

**This space could be promoting  
 YOUR business**

**Contact:  
 Advertising on telephone  
 01799 543297 or  
 The Editor **preferably by e-mail**  
 at [robert@arnold-q.uk](mailto:robert@arnold-q.uk), or  
 telephone 01799 543075**

**Electrician**  
 All types of work carried out  
**Electrical contractor**  
**C D Collins**  
 Crofts View  
 Newport Road  
 Wicken Bonhunt  
 Saffron Walden  
 Essex, CB11 3UE  
 Tel/Fax 01799 540194  
 Mobile: 07831 131 754

**NICK SHUTES PAINTING  
 AND DECORATING LTD**

High quality interior and  
 exterior redecoration  
 Woodwork repairs and  
 replacement  
 Fascias, soffits and cladding

**01799 542385 or  
 07885 778213**

[www.nickshutesdecorating.co.uk](http://www.nickshutesdecorating.co.uk)

**Please mention  
*The Link*  
 when responding to  
 advertisements here.**

**An advertisement this size is  
 only £45 for a whole year!**

**★ ★ ★**  
**Clare's** *gents hairstylist*  
 @ Rickling Green

★ Appointments from  
 7am Mon-Sat  
 ★ FREE easy parking  
 ★ Fully qualified  
 & insured

**Call: 01799 542424  
 Text: 07791 058406**

City & Guilds  
 Qualified



# Binwash

We  
clean  
your  
Wheelie  
bins!

Commercial & Domestic



Monthly Cleaning  
from just **£4.00!**

\* Households only

- Professional equipment
- 4 weekly schedule or one-offs
- Same day as waste collection

[www.binwash-uk.com](http://www.binwash-uk.com)

**01799 529899**

[enquiries@binwash-uk.com](mailto:enquiries@binwash-uk.com)

Advertising in

*The Link*

reaches every household in  
Quendon and Rickling at  
attractive rates

This space could  
be promoting  
**YOUR business**

*It's just £90 for a whole year!*

Contact:

Advertising on telephone  
**01799 543297** or

The Editor

**preferably by e-mail at**  
**[robert@arnold-q.uk](mailto:robert@arnold-q.uk)**, or  
telephone **01799 543075**



**'ALLO 'ALLO!**

Would you like to escape to a traditional French village almost untouched by time?

At Fougerolles du Plessis, you can wind down to a slower pace, taste the fresh local produce, and absorb all the history surrounding you. There is a 4-6 berth fully equipped self-catering ground floor apartment with outside space available for £400 per week. Two twin bedrooms plus a double sofabed. All information and guidance provided from arrival to departure to assure your relaxing break.

Contact Angela on 01799 218061 for more information. (limited places / deposit required)

Please mention

*The Link*

when responding to  
advertisements here.

*An advertisement this size is  
only £45 for a whole year!*

  
**PEASGOOD  
& SKEATES**  
THE  
FAMILY FUNERAL SERVICE

Arrangements can be made in the  
comfort of your own home

Private Chapels of Rest

Pre-paid funeral planning

A personal caring service from a  
Local business, day or night

Shire Hill, Saffron Walden

(01799) 523314

66b High St, Saffron Walden

(01799) 513513

46 Moorfield Rd, Duxford

(01223) 833463

[www.peasgoodandskeates.co.uk](http://www.peasgoodandskeates.co.uk)

  
**WALDEN  
Sweeps**

- Services offered include:
- Chimney and Flue Sweeping
- Wood Burning Stoves
- Open Fires
- Aga/Rayburn
- Bird Nest Removal
- CCTV Examinations

t: 01799 599981  
m: 07956 099788  
e: [paddy@waldensweeps.myasn.co.uk](mailto:paddy@waldensweeps.myasn.co.uk)

[WWW.WALDENHIREYSWEEPS.CO.UK](http://WWW.WALDENHIREYSWEEPS.CO.UK)

**ina nelson**  
electrical installer

Female Electrician  
• Electrical Installation  
• Fault Finding  
• Inspection & Testing  
• Certification  
C&G 2330, 17th Edition, C&G  
2391 Test and Inspection.  
Part P Registered. NIC EIC  
Approved Domestic Installer.

1, Bonnetting Lane,  
Berden,  
Bishops Stortford,  
Essex, CM23 1AG

Tel: 01279 777357  
Mob: 07837 420647  
[inanelson@hotmail.com](mailto:inanelson@hotmail.com)



**CAMWOOD**  
HOME IMPROVEMENTS

Bathrooms  
Kitchens  
Conversions

Fully Qualified Tradesmen  
All other aspects of building  
References available - Fully insured -  
Free advice & estimates - Competitive rates

Office: 01279 493780 Mobile: 07714 300920  
Email: [camwoodhome@outlook.com](mailto:camwoodhome@outlook.com)  
Website: [www.camwoodhome.co.uk](http://www.camwoodhome.co.uk)  
Electrical Safety Register Approved Contractor

**Cwena Spa**  
by Karen Dovaston-Harris



Complete relaxation and rejuvenation in our unique Cwena Spa experience

- Hydrotherapy exercise Pool & Jacuzzi
- Steam room, Sauna and Relaxation beds
- Full range of beauty treatments
- Full range of advanced aesthetic treatments

To book call: 01799 541888  
visit: [www.karendovastonharris.co.uk](http://www.karendovastonharris.co.uk)  
or email: [beauty@karendovastonharris.co.uk](mailto:beauty@karendovastonharris.co.uk)

**STEPHENS-CHIMNEY SWEEP**

- Fully Insured
- Smoke Test
- Cows Fitted
- Flexi Liner Installs
- Sweeping
- Stove Installations
- Nest Removal
- Stove Servicing
- Advice Service
- CCTV

Tel: 0800 112 3600  
Mob: 0791 870 8626  
[www.stephenschimneysweep.co.uk](http://www.stephenschimneysweep.co.uk)




**Interested in TIME BANK?**

Join our local Time Bank register to offer and receive ad hoc help with every day jobs such as: small gardening issues, dog walking, befriending, cups of tea, baking, light housework, dietary advice, running errands, and much more ...

Contact: Tessa Deriziotis on:  
01799 510 525 (work)  
07904 890991 (home)  
[volunteer@volunteeruttlesford.org.uk](mailto:volunteer@volunteeruttlesford.org.uk)



**Please mention**

*The Link*

**when responding to advertisements here.**

**An advertisement this size is only £45 for a whole year!**

**CHIROPODIST**

Mrs Julie Golden  
HPC Registered/State Registered

Home Visiting Practice Est. 1994

**01279 873492**

Mobile 07916 075451

A professional service at a competitive price

**Caring for Gardens**



**Andrew Thomson**

Tel: Quendon 01799 543253 or  
Mobile 07876331710  
[andrew.d.thomson@btinternet.com](mailto:andrew.d.thomson@btinternet.com)  
[www.caringforgardens.co.uk](http://www.caringforgardens.co.uk)

For anyone who needs help from a caring gardener. No job is too small and weekly work is always especially welcomed.

 **NFU Mutual** Insured

**Quendon OSTEOPATHY**

Jacolin Sheaf (Lampon) D.O.  
4a Red Cottages,  
Cambridge Road, Quendon,  
Saffron Walden, Essex CB11 3XH

Structural Osteopathy,  
Cranial Osteopathy.  
Treatment of back and neck pain,  
muscle and joint pain,  
Tension headaches,  
trapped nerves and sports injuries.  
One-to-one Pilates instruction.  
Specialist Clinic for  
pregnant mothers,  
babies and children.

**Tel: 01799 543444**  
Email: [info@quendonosteopathy.co.uk](mailto:info@quendonosteopathy.co.uk)  
Web: [www.quendonosteopathy.co.uk](http://www.quendonosteopathy.co.uk)

**ONSITE PARKING AT THE NEW CLINIC**

**SHELFORD HEATING**

*More than just a service*






Heating Plumbing Renewables Bathrooms

All Domestic & Commercial works undertaken

[www.shelfordheating.co.uk](http://www.shelfordheating.co.uk)

T: 01223 833426 E: [sales@shelfordheating.co.uk](mailto:sales@shelfordheating.co.uk)

**TONY WOOD**  
Qualified Registered Electrician

All electrical works undertaken

Re-wires, new circuits, extensions  
Replacement Consumer Units  
Electric showers, heating, additional sockets  
Internal and external lighting

Free advice & estimates  
References available  
Competitive rates  
Fully insured

Please ring Tony on  
07714 300920  
01279 495780  
Or e-mail [camwoodhome@outlook.com](mailto:camwoodhome@outlook.com)  
Electrical Safety Register Approved Contractor



**Advertising in**  
*The Link*  
**reaches every household in Quendon and Rickling at attractive rates**

**This space could be promoting YOUR business**

**Contact:**  
**Advertising on telephone**  
01799 543297 or  
**The Editor preferably by e-mail**  
at [robert@arnold-q.uk](mailto:robert@arnold-q.uk), or  
telephone 01799 543075